

Item No. 13.	Classification: Open	Date: 19 December 2013	Meeting Name: Health and Wellbeing Board
Report title:		Developing the Southwark Joint Strategic Needs Assessment (JSNA)	
Ward(s) or groups affected:		All wards	
From:		Dr Ruth Wallis, Director of Public Health	

RECOMMENDATIONS

That the board agree

1. The 'Framework for health and wellbeing' as an approach for assessing and understanding the health & wellbeing and social care needs of Southwark people.
2. The proposed structure of the Southwark JSNA.
3. The proposed delivery plan for the Southwark JSNA.
4. The establishment of a Southwark JSNA Steering Group.
5. The use of the draft templates and guidance for needs assessments.
6. The proposal that the JSNA is located on the Southwark Council website.

BACKGROUND INFORMATION

7. This paper outlines a proposed process to update the Southwark JSNA for 2013-14 and annually thereafter.

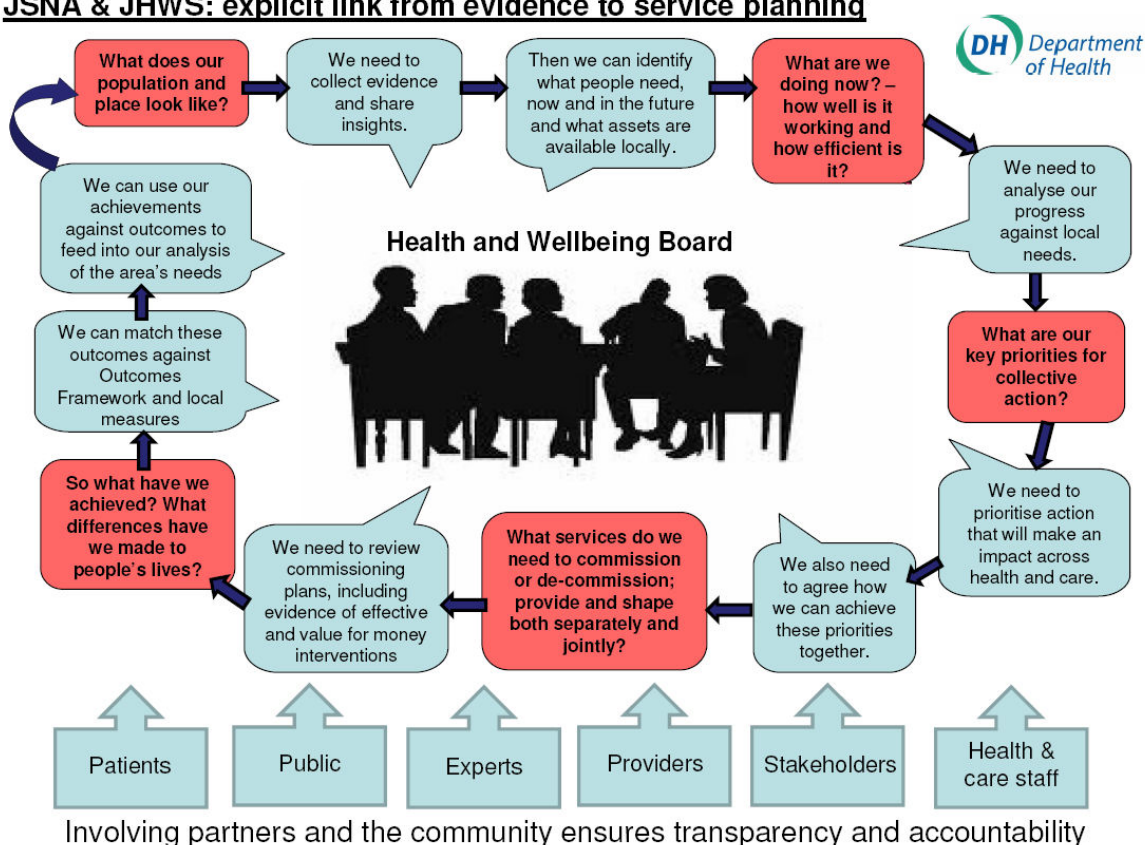
What is the JSNA

8. The JSNA is a process which includes a framework that identifies the current and future health & wellbeing and social care needs of a local population allowing commissioners to identify priority areas to improve outcomes and reduce inequalities. JSNAs are not an end in themselves but a continuous process of assessment and planning.
9. The JSNA process brings together several pieces of work including:
 - local health statistics; outcomes analysis
 - identification of gaps in knowledge and information
 - assessment of local service provision
 - evidence of what interventions work
 - analysis of whether interventions provide value for money
 - views of patients and the public through community engagement
 - asset assessment

Purpose of the JSNA

- The core aim of the JSNA is to provide intelligence and evidence to enable the local prioritisation process for commissioning which will be used to determine what actions local authorities, the local NHS and other partners need to take to meet health & wellbeing and social care needs, and to address the wider determinants that impact on health & wellbeing. These commissioning priorities will support devising strategies and delivery of plans through partnership work to improve the public's health and reduce health inequalities.
- The Department of Health diagram below shows how the JSNA provides the evidence base from which strategies, such as the Joint Health and Wellbeing Strategy (JHWS), are developed and services are commissioned.

JSNA & JHWS: explicit link from evidence to service planning



Working in partnership

- A successful JSNA requires a collaborative approach including the involvement of the local community through the entire JSNA process.

Previous decisions taken by the Health and Wellbeing Board

- The Health and Wellbeing Board have not taken any previous decisions in relation to the JSNA.

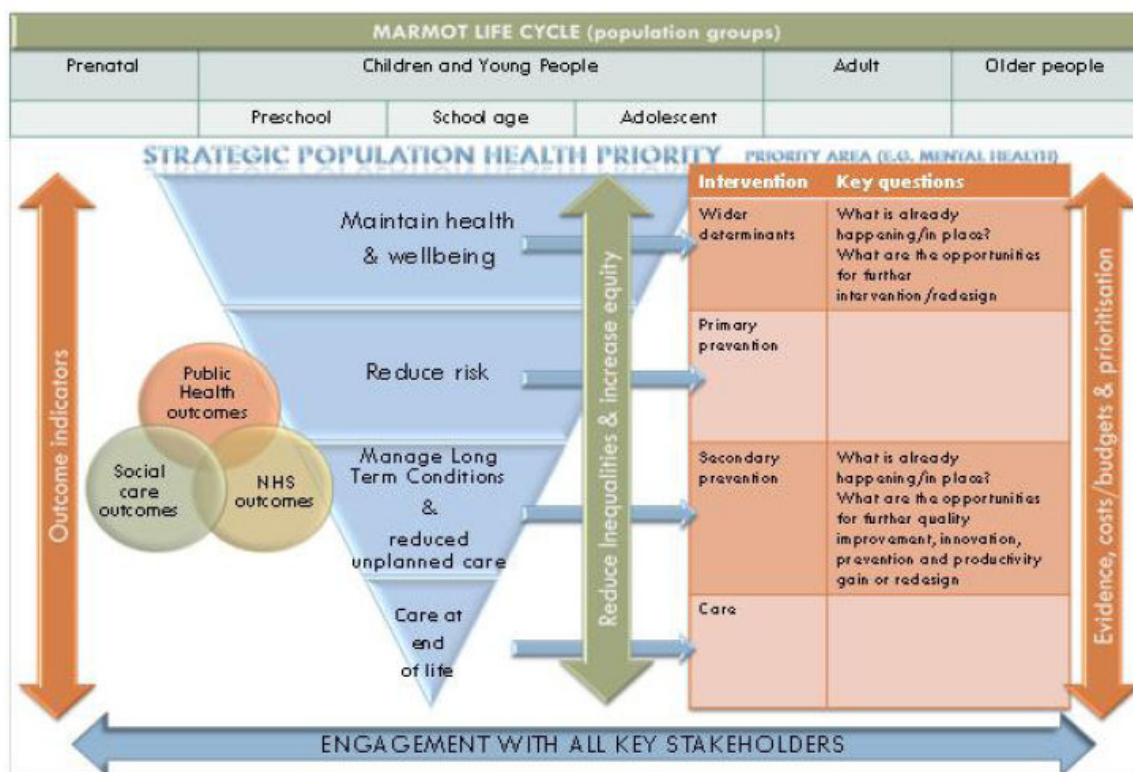
KEY ISSUES FOR CONSIDERATION

Health and Social Care Act 2012

14. Southwark Council and Southwark Clinical Commissioning Group (CCG) have a duty to undertake a JSNA in relation to the Local Authority area. This duty must be discharged via the Southwark Health and Wellbeing Board (*Summary table of the duties and powers introduced by the Health and Social Care Act 2012 relevant to JSNAs and JHWSs*, Department of Health, 26 March 2013).
15. Southwark CCG, the National Commissioning Board and Southwark Council have a legal obligation to have regard to the relevant JSNA (and Joint Health and Wellbeing Strategy (JHWS)) in exercising their functions.

A framework for health and wellbeing

16. The diagram below (developed by Lambeth & Southwark Public Health Directorate) describes a framework approach through which the health & wellbeing and social care needs of populations can be assessed and understood.



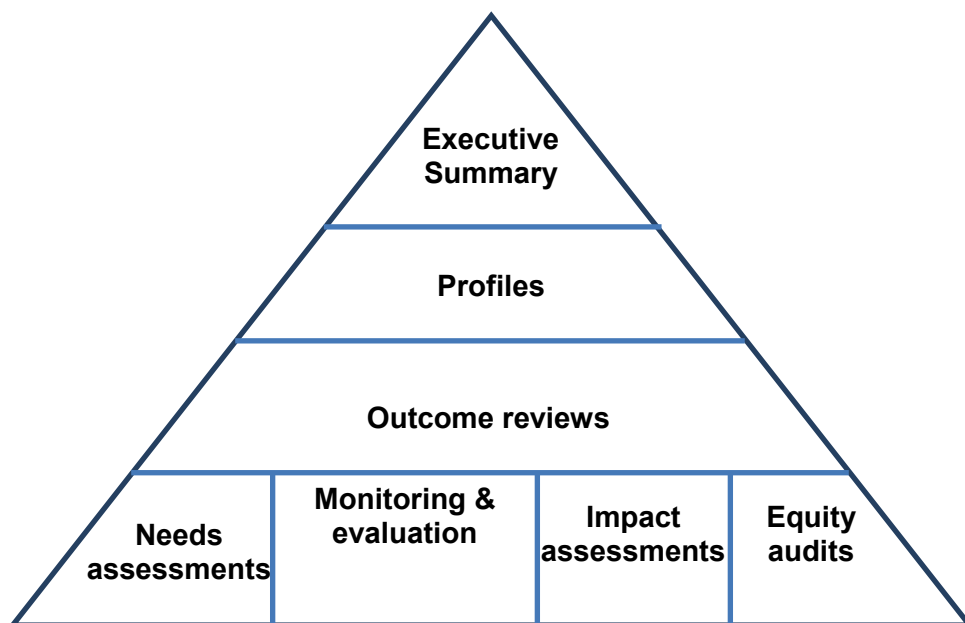
17. The framework acknowledges that:

- interventions are required across the life cycle (rather than at a single point in time)
- inequalities in health and wellbeing are the result of an accumulation of disadvantages through life
- a series of nationally-agreed outcome indicators are available to measure local improvement in health & wellbeing, social care and welfare status

- individuals and communities should be supported to maintain their current health & wellbeing; reduce future risks and manage existing conditions and have access to the highest standards of care at the end of their lives
- interventions must be evidence based and provide value for money
- work to improve health & wellbeing and social care must reduce health inequalities and promote equity of access to services and outcomes
- engagement with stakeholders, including the local community, is central to improving health & wellbeing and social care.

Structure and delivery of the JSNA

18. The figure below describes the proposed structure of the Southwark JSNA.



19. The table summarises the proposed outputs that will be included in the 2013-14 (and future) JSNAs, their production schedule and who is responsible for their production. These outputs reflect the framework for health and wellbeing.
20. The executive summary will be updated annually. The proposed JSNA Steering Group (see below) will need to decide how regularly the proposed profiles and outcome reviews are produced. The remaining components of the JSNA – specific needs assessment, monitoring & evaluations, impact assessments and equity audits – have no planned cycle for delivery. The JSNA Steering Group will also need to consider how work in these areas is prioritised for each annual cycle.
21. The current Southwark JSNA will be refreshed according to the delivery plan outlined below by 01 April 2014.

Delivery plan: annual production of JSNA outputs

Output	Production schedule	Responsibility for producing	Responsibility for signing-off
1. Executive Summary			
	Annually	Public Health	JSNA Steering Group
2. Profiles			
Demography profile	To be confirmed	Public Health	JSNA Steering Group
Life expectancy profile	To be confirmed	Public Health	JSNA Steering Group
Lifestyle and risk factors profile	To be confirmed	Public Health	JSNA Steering Group
Children and Young People's health profile	To be confirmed	Public Health	JSNA Steering Group
Older persons' health profile	To be confirmed	Public Health	JSNA Steering Group
Ward profiles (combined to provide Community Council and Locality profiles)	To be confirmed	Corporate Strategy and Public Health	JSNA Steering Group
Public Health England Profiles E.g. Health profile, Local Alcohol Profiles for England	To be confirmed	Public Health	JSNA Steering Group
3. Outcome reviews			
Public Health Outcomes framework	To be confirmed	Public Health	JSNA Steering Group
Adult Social Care Outcomes review	To be confirmed	Children's and Adults' Services	JSNA Steering Group
NHS Outcomes Framework	To be confirmed	Southwark CCG	JSNA Steering Group
Marmot indicators for local authorities	To be confirmed	Public Health	JSNA Steering Group
Economic downturn and health outcomes	To be confirmed	Public Health	JSNA Steering Group
4. In-depth needs assessments			
	No planned cycle	All stakeholders	JSNA Steering Group
5. Monitoring & evaluation			
	No planned cycle	All stakeholders	JSNA Steering Group
6. Impact assessments			
	No planned cycle	All stakeholders	JSNA Steering Group
7. Equity audits			
	No planned cycle	All stakeholders	JSNA Steering Group

Governance

22. It is proposed that a Southwark JSNA Steering Group is re-established (a group last met in January 2013).
23. The purpose of this group will be to co-ordinate the production of the Southwark JSNA. The Steering Group will need to develop a collaborative approach for developing the JSNA. The Group will also be responsible for signing-off outputs before making them publically available on the JSNA website.
24. This group will not be responsible for writing the content of the JSNA. A range of stakeholders including council departments and the Southwark Clinical Commissioning Group will contribute to the JSNA by collating and interpreting data and writing sections.
25. The Steering Group will also need to consider how regularly the proposed JSNA outputs should be refreshed and the prioritisation process for specific needs assessment, monitoring & evaluation, impact assessments and equity audits.

Needs assessment templates and guidance

26. The Lambeth & Southwark Public Health Directorate has produced a suite of templates (and associated guidance) which will support those individuals/groups who are undertaking needs assessment. The templates will encourage a standard approach to needs assessments across stakeholders (see Appendix 1)

Communication

27. Southwark JSNA will be hosted on the Southwark Council Website.

BACKGROUND DOCUMENTS

Background Papers	Held At	Contact
<i>Summary table of the duties and powers introduced by the Health and Social Care Act 2012 relevant to JSNAs and JHWSs, Department of Health, 26 March 2013).</i>	Public Health Directorate 160 Tooley Street London	Anna Richards 020 7525 7674

APPENDICES

No.	Title
Appendix 1	Pre Needs Assessment Guidance and Tools

AUDIT TRAIL

Lead Officer	Dr Ruth Wallis, Director of Public Health	
Report Author	Anna Richards, Consultant in Public Health	
Version	Final	
Dated	10 December 2013	
Key Decision?	Yes	
CONSULTATION WITH OTHER OFFICERS / DIRECTORATES / CABINET MEMBER		
Officer Title	Comments Sought	Comments Included
Director of Legal Services	No	No
Strategic Director of Finance and Corporate Services	No	No
Public Health Senior Management Team	Yes	Yes
Cabinet Member	No	No
Date final report sent to Constitutional Team	10 December 2013	